

LIGHT/SET/LOCK (A Key) ———

REV (B Key) ———



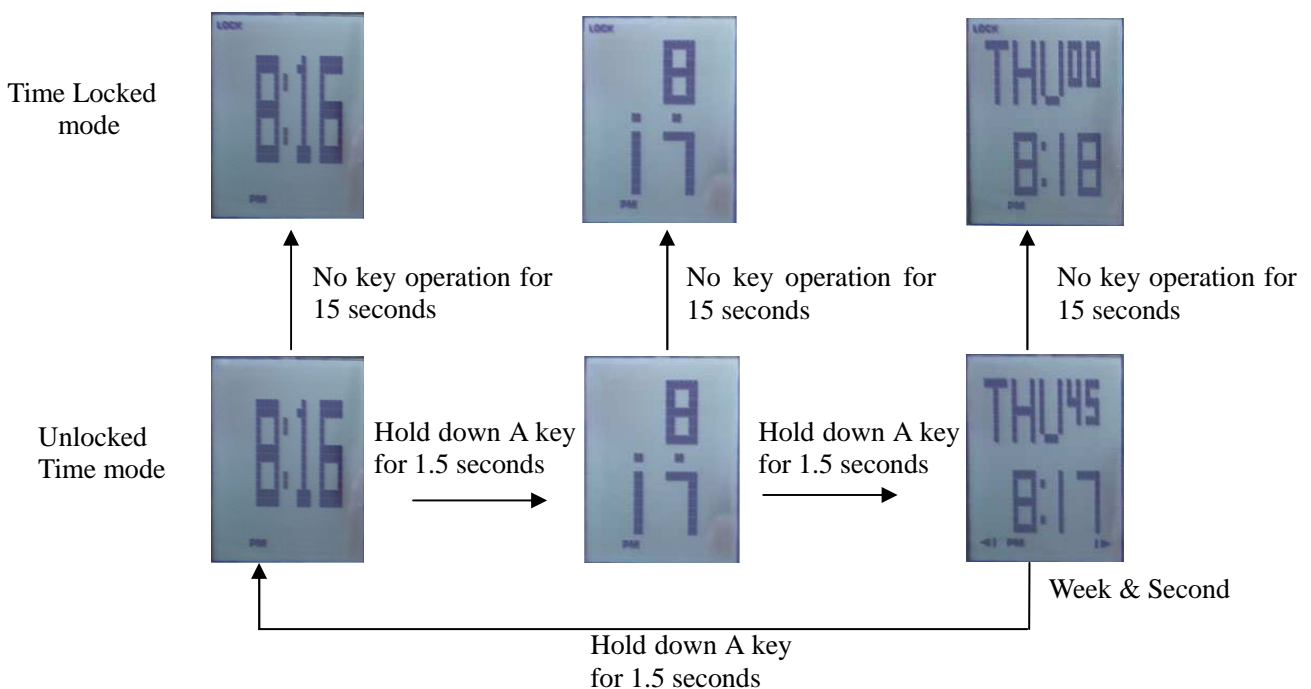
—— (D Key) UP+

—— (C Key) FWD/DOWN-

A . Features

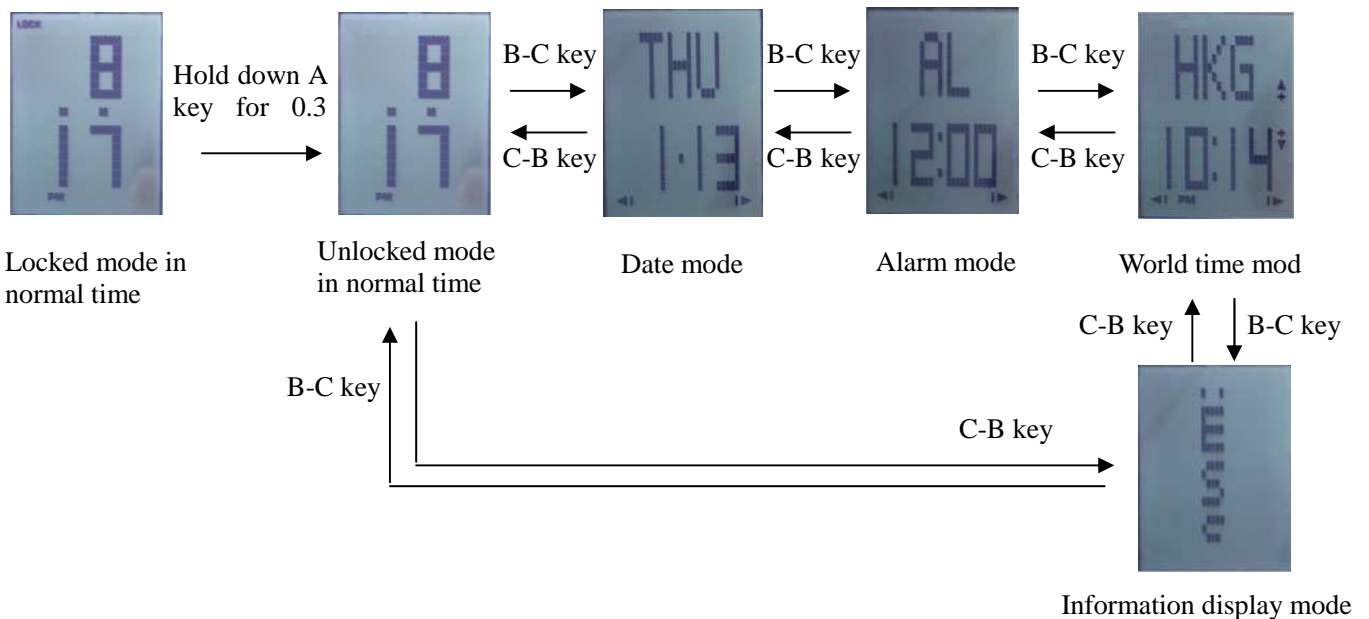
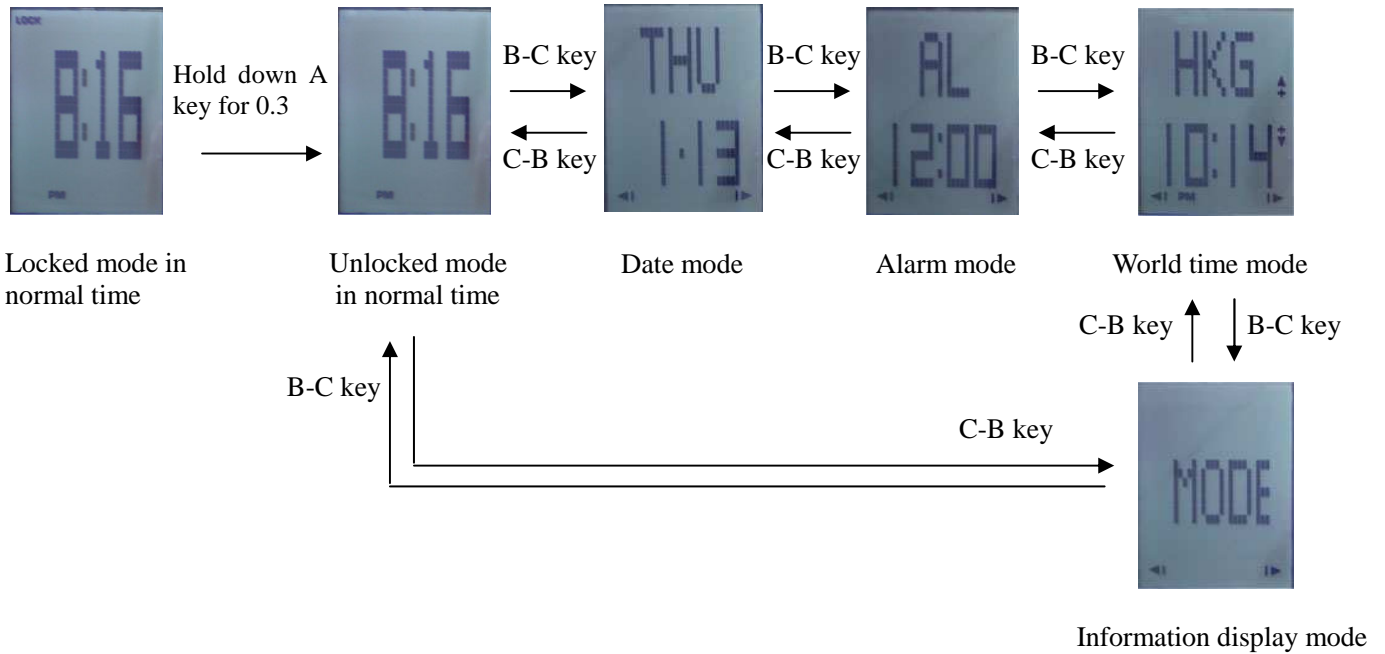
- 4 digits LCD screen displays hour, minute (month, date, week).
- 12H/24H format, auto calendar.
- Alarm.
- World time.
- Information display: 26 letters and 9 digits (from 0 to 9) can be input. (14 characters have scrolling display function).
- EL backlight.
- Touch screen function.

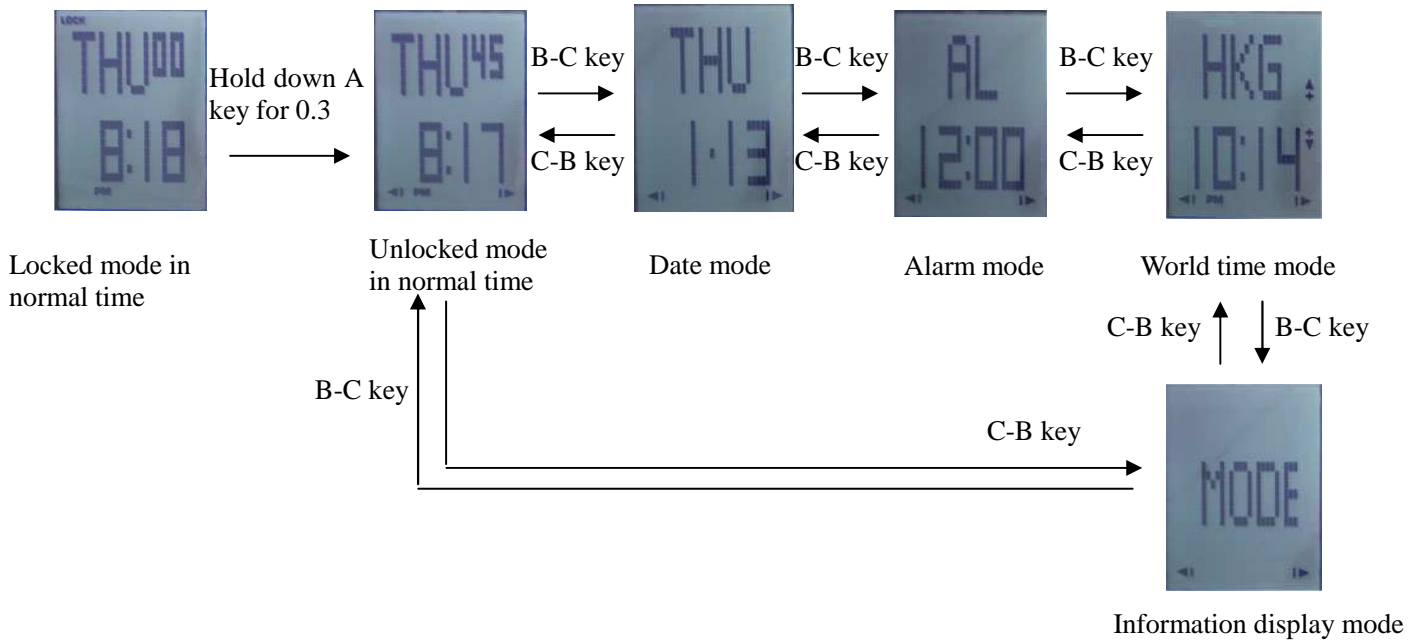
B . Product function mode



- In locked mode, touch A key for 0.3 seconds and drag it to B key, with EL illuminates for 3 seconds.
- In unlocked mode, touch A key and drag it to B key, with EL illuminates for 3 seconds.
- In time display mode, Press and hold A key for 1.5 seconds come with the sound B. Then loosen your finger and it will change to normal time display format.

- In locked mode, hold down A key for 0.3 seconds to unlock. The watch will lock automatically if you do not perform any key operation within 15 seconds.
- In unlocked mode, drag B to C key to select display mode forward, drag C to B key to return selected display mode.
- In world time mode, drag to C-D (key) to select time zones display mode upward, drag D-C (key) to select time zones display mode downward.

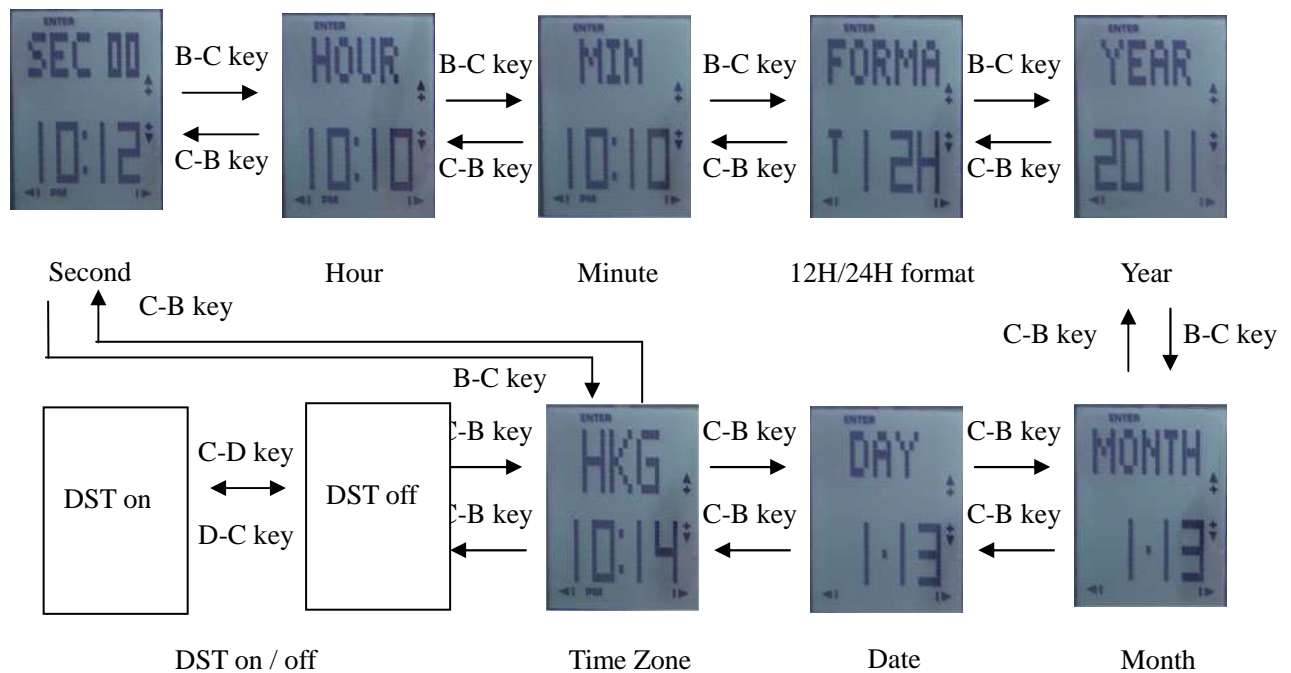




- In date and alarm mode, the watch will lock automatically and return to normal time mode if you do not perform any key operation within 15 seconds.
- In world time and information mode, the watch will lock automatically if you do not perform any key operation within 15 seconds, and it will not return to normal time mode.

1. Time and date setting

- When at the condition of locked mode in normal time, hold down A key for 3 seconds, “time zone” starts to flash, which indicates enter into time setting. Drag B to C (or darg C to B) in sequence as below:



- Drag C to D to increase the time zone, hold down D for 3 seconds to increase fast.
- Drag D to C to decrease the time zone, hold down C for 3 seconds to decrease fast.
- Drag C to D or drag D to C to turn on / off the daylight saving time, and the indicator of DST will be display on the screen when turn on the daylight saving time.
- Drag C to D or drag D to C to clear the seconds to zero.
- Drag C to D increase the flashing value, hold down D for 3 seconds to increase fast.
- Drag D to C decrease the flashing value, hold down D for 3 seconds to decrease fast.
- Drag C to D or drag D to C to select 12H or 24 H format.
- Touch A to confirm, and then exit from setting mode.
- If there is no key operation in 15 seconds, the system will return to locked mode in normal time.

Please note: If the countries and regions which do not use the daylight saving time (DST), the watch will stop using DST automatically, and can not enter to DST on / off mode. please refer to cities’s code of world time table, in this table, if the city code with the indicator of “*”, which means this city with daylight saving time. On the contrary, which means this city without daylight saving time. When in world time mode, and it is the time zone of local time, DST in normal time will be turned on / off automatically when it is turned on / off. In time and date setting, if you turn on / off daylight saving time (DST)after selecting time zones, the time zones of world time mode will turn on / off daylight saving time (DST) automatically at the same time.

2. Alarm setting

- In alarm display mode, hold down A key for 3 seconds, “hour” starts to flash, which indicates alarm time setting screen, drag B to C key in sequence as below:



- Drag C to D key to increase the flashing value, hold down D key for 3 seconds to increase fast.
- Drag D to C key to decrease the flashing value, hold down C key for 3 seconds to decrease fast.
- To turn on / off alarm (ALM) by dragging C to D key or dragging D to C key.
- Touch A key to confirm, and exit setting mode.
- The watch will exit setting automatically if you do not perform any key operation within 15 seconds, and return to normal time locked mode.
- When alarm time is reached, the watch will alarming with BB-BB for 30 seconds, and you can touch A key for 0.3 seconds to stop alarming.
- In random mode, when it is unlocked, press B, C, or D key is invalid if it is alarming.

3. World time

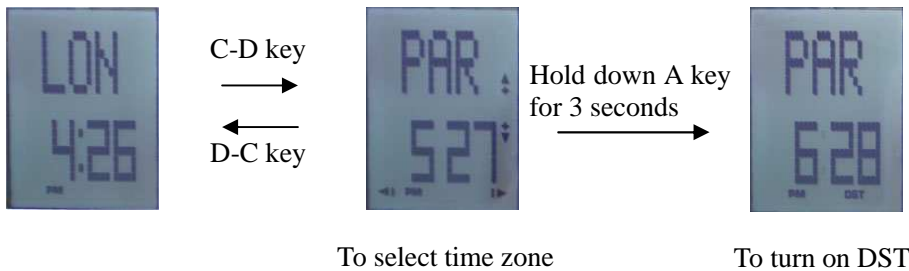
- In world time unlocked mode, time of 31 world cities can be viewed.
- Drag C to D key to view world time upward, hold down D key for 3 seconds to view upward time fast .
- Drag D to C key to view world time downward, hold down C key for 3 seconds to view downward time fast .
- The watch will lock up automatically if you do not perform any key operation within 15 seconds, and return to world time locked mode.
- "DST" will display on LCD screen if the Daylight Saving Time is turned on.

Cities' code of world time table:

City code	City	GMT Differential	Other major cities in same time zone
GMT		00. 0	
LON*	London	00. 0	Dublin,Lisbon London,Casablanca,Dakar,Abidjan
PAR*	Paris	+01. 0	Milan Rome,Madrid,Amsterdam,Algiers.Hamburg, Frankfurt,Vienna,Stockholm,Berlin.
BER*	Berlin	+01. 0	
ATH*	Athens	+02. 0	Helsinki,Beirut,Damascus,Frankfurt,Vienna,Madrid,Stockholm
CAI	Cairo	+02. 0	Athens Helsinki,Istanbul,Beirut Damascus Cape town
JRS*	Jerusalem	+02. 0	Athens Helsinki,Istanbul,Beirut Damascus Cape town
JED	Jeddah	+03. 0	Kuwait Riyad,Aden Addis Ababa Nairobi Moscow Shiraz
THR*	Tehran	+04. 0	Tehran
DXB	Dubai	+04. 0	Abu Dhabi Muscat
KBL	Kabul	+04. 5	
KHI	Karachi	+05. 0	Male
DEL	Delhi	+05. 5	Mumbai Kolkata
DAC	Dhaka	+06. 0	Colombo
RGN	Yangon	+06. 5	Yangon
BKK	Bangkok	+07. 0	Jakarta,Phnom Penh,Hanoi Vientiane
HKG	HongKong	+08. 0	Singapore Kuala Lumpur Beijing Taipei Manlla Perth Ulaanbaatar
SEL		+09. 0	
TYO	Tokyo	+09. 0	Seoul Pyongyang
ADL	Adelaide	+09. 5	Darwin
SYD	Sydney	+10. 0	Melboume Guam Rabaul
NOU	Noumea	+11. 0	Pt Vila
WLG*	Wellington	+12. 0	Christchrch Nadi Nauru Is
PPG	Pago	-11:0	
HNL	Honolulu	-10. 0	Papeete
ANC*	Anchorage	-9. 0	Nome
LAX*	Los Angeles	-8. 0	San Francisco,Las Vegas,Vancouver,Seattle/Tacoma,Dawson City
DEN*	Denver	-7. 0	El Paso,Edmonton
CHI*	Chicago	-6. 0	Houston,Dallas/Ft,worth,New Orleans,Mexico City,Winnipeg
NYC*	New York	-5. 0	Montreal,Detroit,Miami,Boston,Panam a City,Havana,Lima,Bogota
CCS	Caracas	-4. 0	La Paz,Santiago,Pt Of Spain
RIO*	Rio De Janeiro	-3. 0	Sao Paulo, Buenos Aires,Brasilia,Montevideo
REC	Recife	-2. 0	
AZO*	Azores	-1. 0	

4. Daylight Saving Time setting Mode

- When at the condition of unlocked mode in world time, hold down A key for 3 seconds to turn on / off DST as following:

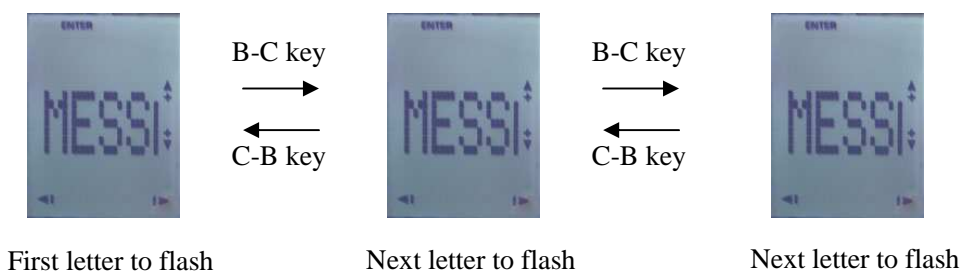
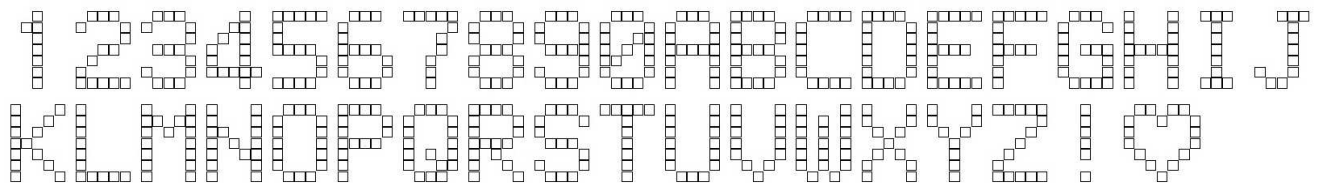


- Drag C to D key to select time zone upward, hold down D key for 3 seconds to select it fast and upward .
- Drag D to C key to select time zone downward, hold down D key for 3 seconds to select it fast and downward.
- Hold down A key for 3 seconds to turn on / off DST, “DST” will display on LCD screen when it turned on..
- The watch will lock up automatically if do not perform any key operation within 15 seconds, and return to world time locked mode.
- When it is the time zone of local time, DST in normal time will be turned on / off automatically when it is turned on / off.

Note: If the countries and regions which do not use the daylight saving time (DST), the watch will forbid to use DST automatically, and can not enter to DST on / off mode. please refer to cities’s code of world time table, in this table, if the city code with the indicator of “*”, which means this city with daylight saving time. On the contrary, which means this city without daylight saving time.

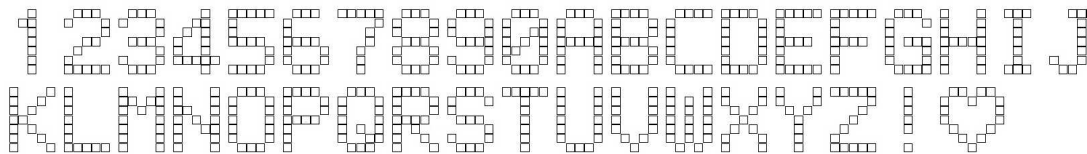
5. Information display setting

- After unlocking, in information mode, hold down A key for 3 seconds, the first “character” starts to flash, which indicates the state of information editing, drag B to C key to select next flashing character, 14 characters can be input (including space), each character can be selected as below:

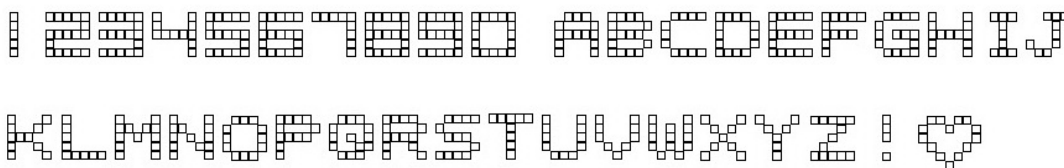


- Drag B to C to select next character rightward.
- Drag C to D key to select character forward, hold down D key for 3 seconds to select forward character fast
- Drag D to C key to select character backward, hold down D key for 3 seconds to select backward character fast.
- Press A key to confirm the length of information, the rest of characters will be deleted automatically.
- The watch will lock up automatically if you do not perform any key operation within 15 seconds, and return to information locked mode.

Characters are scrolled to display leftward:



Characters are scrolled to display upward:



6. Operating instruction of touch screen

- a) Interaction of touch screen is through body motion to induce signal, and then transmit to the watch module control. When the surface of screen is touched by the objects which are similar to our body, such as: water, metal, strong electromagnetic transmits etc that will activate the keys-lock or change the watch functional mode. If some key-pressed area of the screen is touched by above mentioned object for long time, the touch screen will not be able to work, and it will recover to work by moving the object in two minutes.
- b) If the watch is in high humidity condition(over 90%) for a long time, which will coagulate and become water on the surface of the touch screen, and cause the touch screen will not be able to work, it will recover to work by cleaning the water in two minutes.
- c) After replacing battery or watchcase, this watch will check hardware and adjust the sensitivity of keys automatically, touch screen will enter to normal state in two minutes.

7. Operation insturction of resetting function

Use a metal stick to touch the “AC” hole to make the two points realize short circuit, then observe the LCD screen, when all content are displayed, and at the same time, backlight illuminates automatically, which indicates the movement has completed reset effectively.

C. Specification

- Module Size : 28.6*35.2mm
- Module Thickness (include buzzer) : 8.50mm
- Operational Temperature Range : -10°C~60°C
- Operational Voltage : 3.0V
- Accuracy : ±30sec/month
- Battery Code : CR2025(capacitance: 170m Ah)
- static average current : ≤7.99u A (static maximum current : 15.0uA)
- Alarm average current : ≤1.41m A (Alarm maximum current : 6.0mA)
- EL lighten average current : ≤9.25m A (ELlighten maximum current : 12mA)
- Battery life : ≥18 months (Japan Lithium)

Under the following conditions:(4 backlight operation (3 seconds) perday; 60 seconds of alarm operation per day)

Note of matching the watchcase:

As for this watch, the sensitivity of keys will have large difference if you match different watchcase, please consult with our development department when you open new watchcase mould, only in this way, the watch can be matched the best watchcase.

	Prepared	Checked	Approved
Name	李觉	赵星亮	宋检望
Date	11/12/08	11/12/08	11/12/08